



## **Summer 2020 Queen St. Closure to Vehicular Traffic in Downtown Kincardine**

### **Guiding Document**

Queen Street will be closed from North of Durham Market Street North, to Lambton Street, from Friday 5 PM to Sunday 9 PM, beginning July 3rd and until September 7<sup>th</sup>, 2020.

This road closure has been approved by Council of the Municipality of Kincardine in order to support current and expected future physical distancing and public health restrictions around the Covid-19 Pandemic.

This document covers the various items that businesses and staff must adhere to in order for the street closure to be successful. With the provincial regulations in place this document and directives may change as the guidelines change.

#### **1. Accessibility**

- a. All items installed on roadway must meet accessibility requirements as recommended by the committee.
  - i. Please refer to the Accessibility for Ontarians with Disabilities Act (AODA), 2005 at the end of this document.
  - ii. Please follow the AODA Accessible exterior paths of travel as highlighted [here](#).
  - iii. Please read through the “How to make a public space accessible section on the Ontario website [here](#) for further information.

#### **2. Barricades**

- a. Deployment and responsibility
  - i. Agreements will be completed with Tiverton Agricultural Society and The Kincardine Rotary Club to put up and tear down the barricades.

## Summer 2020 Queen St. Closure to Vehicular Traffic in Downtown Kincardine

- ii. These two organizations have the necessary training and insurance to complete this task.

### 3. Business Directives

- a. Electricity, Cords and Water Access
  - i. Cannot cross the sidewalk, on ground or above ground, for accessibility and physically distancing purposes of keeping sidewalks completely clear. If provincial regulations change to allow for smaller events with music or entertainment the municipality will consider changing this clause.
- b. Decoration and Design
  - i. Must be appropriate and fall within the universal design standards as per AODA.
- c. Sandwich boards
  - i. Signage must comply with the sign by-law, located [here](#). Contact Building and Planning for further questions around signage.
- d. Frontage
  - i. All businesses may use the roadway frontage within their property line, leaving the 14 feet access in the middle of the road.
- e. Sidewalks
  - i. Merchants must follow Sidewalk By-Law 2011-143 2.0 as follows: Merchants may display merchandise and/or advertising devices (e.g. sandwich board signs) from their place of business on the road allowance immediately in front of their place of business under the following conditions:
    - a. the merchandise and/or advertising device is restricted to a maximum width of 76cm (30 in.) and a maximum height of 1.2 metres (4 feet);
    - b. in all cases where merchandise and/or an advertising device is placed on the sidewalk, a minimum of 127 cm. (50 in.) clearance must be maintained on the sidewalk for pedestrian travel;
    - c. the merchandise and/or advertising device must be located immediately in front of the place of business;
    - d. such merchandise and/or advertising device shall only be displayed during normal business hours.
  - ii. Merchandise and/or advertising devices shall only be displayed on public property if there is insufficient private property in front of the place of business.
  - iii. The display of merchandise and/or advertising devices is permitted in all commercial and industrial zones in the Municipality of Kincardine.
- f. Licensed areas during the road closure
  - i. Liquor licenced areas are not permitted to extend to the street area outside of pre-approved outdoor patio applications.
  - ii. Tables placed on the roadway in front of restaurants will not be permitted alcohol service.

## Summer 2020 Queen St. Closure to Vehicular Traffic in Downtown Kincardine

- iii. Pedestrian wayfinding signage will be provided to the merchants who are have outdoor patios.

### 4. On Road Activity

- a. Emergency and Road Access
  - i. 14 feet in the middle of the road must be left open at all times for emergency access and road work that may be needed.
    - 1. 7 feet measured both easterly and westerly from the roads painted centerline will make up the 14 foot access corridor.
  - ii. All municipal vehicles may enter the roadway as required.
- b. BIA Chairs
  - i. Please contact the Downtown Development Manager, Rick Clarke at [downtownkincardine@gmail.com](mailto:downtownkincardine@gmail.com) if you need a BIA chair moved.
- c. Flower Watering/Garbage Removal
  - i. Will be done during the hours that the road is open or prior to any of the business openings or as required.
- d. Entertainment & Busking
  - i. Is not currently permitted under the Emergency Management and Civil Protection Act.
  - ii. Will be reconsidered if there are changes to the act.
- e. Tents
  - i. Shade tents (less than 60m<sup>2</sup> (656 ft<sup>2</sup>) in area) are allowed to be set up on the roadway during the allotted closure time period.
  - ii. All tents must fit within accessibility and this documents procedures.
  - iii. Larger tents would require a building permit, see information [here](#).
- f. Vendors
  - i. May be selected to fill gaps (in front of services and offices that will not be operational during the weekend) during closure for more visual interest and to encourage more foot traffic to retailers.
  - ii. Vendors will be provided safety protocols, as well as entry and exit rules in order to participate (ie. Entering with vehicles to unload product, removal of vehicle after set up is complete).

### 5. Liability

- a. By participating in the road closure, you agree that the Municipality is not liable for any damage to merchandise or product.

### 6. Parking

- a. **Current parking in Downtown Kincardine**
  - i. Durham market – 77 regular, 1 accessible
  - ii. Queen Street – 116 regular, 6 accessible
  - iii. Lambton Street Municipal Lot – 35 regular, 1 Accessible, 2 for buggies
  - iv. Lambton Street – 34, 1 accessible
  - v. Princes Street Lot – 188 regular and 2 accessible
  - vi. Unmarked Spaces along side streets – 60
  - vii. Total - 510 regular spaces, 11 accessible spaces
- b. **Additional Accessible Parking**

## Summer 2020 Queen St. Closure to Vehicular Traffic in Downtown Kincardine

- i. As per the Accessibility Advisory Committee recommend that Council per Resolution 06/15/2020 - 08, add four additional accessible parking spaces in the following locations abutting the affected area of the Queen Street closure:
  - Durham Market North (beside Victoria park on the north side)
  - 708 Queen Street (Dairy Queen)
  - 827 Queen Street (Rogers)
  - 832 Queen Street (Bar Down)
- ii. The Accessibility Advisory Committee recommend that Council add a permanent new accessible parking space on Durham Market South near the entrance to the accessible washrooms at Victoria Park.
- iii. The three temporary accessible parking spots will have signage placed on the sidewalk and will be covered when the road closure is not running.
- iv. See Section 11 of this document for the accessible parking map.

### 7. Refreshment vehicles

- a. Will be allowed as permitted by the Municipality through the refreshment vehicle application. The form is located [here](#).

### 8. Roadway Access

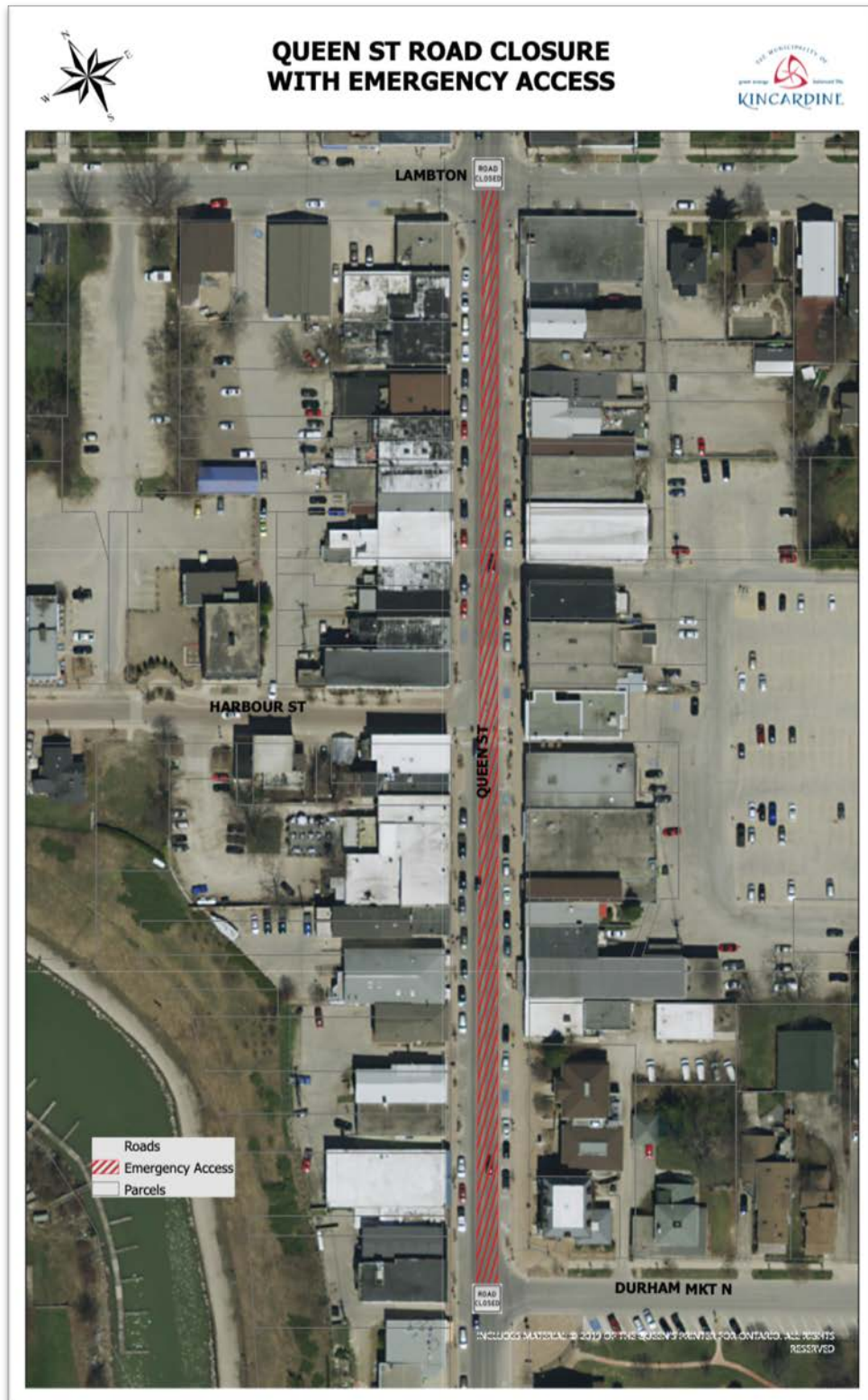
- a. Resident/Tenant Access
  - i. Tenants will apply for a special permit in which they will be able to park in municipal lots overnight. Tenants will be encouraged to move their vehicles prior to the closure, and will be permitted access as of Sunday evening when road allowance is opened to public. The special permit form is located [here](#).
- b. Delivery Access
  - i. Delivery vehicles will park in alternate locations (side streets, municipal parking lots, etc. and deliver by foot.
  - ii. It is the responsibility of store owners to let their delivery companies know about the road closure.
- c. Harbour Street
  - i. Access will only be blocked to Bruce Steakhouse back parking lot. Erie Belle and Harbour Inn can be accessed via Lambton Street, additional hotel parking also located off Huron Terrace.

### 9. Signage

- a. Signage communicating the road closure to be up all summer on the barricades.
- b. Signage reminding people to remove their vehicle from the street on Friday nights before 5pm. To stay up all summer.
- c. Pedestrian Wayfinding Signage – The Municipality will provide signage to all restaurants with an outdoor patio that will help guide pedestrian around the outdoor patios. These signs will be placed on business existing patio fence, pole, planter etc.

# Summer 2020 Queen St. Closure to Vehicular Traffic in Downtown Kincardine

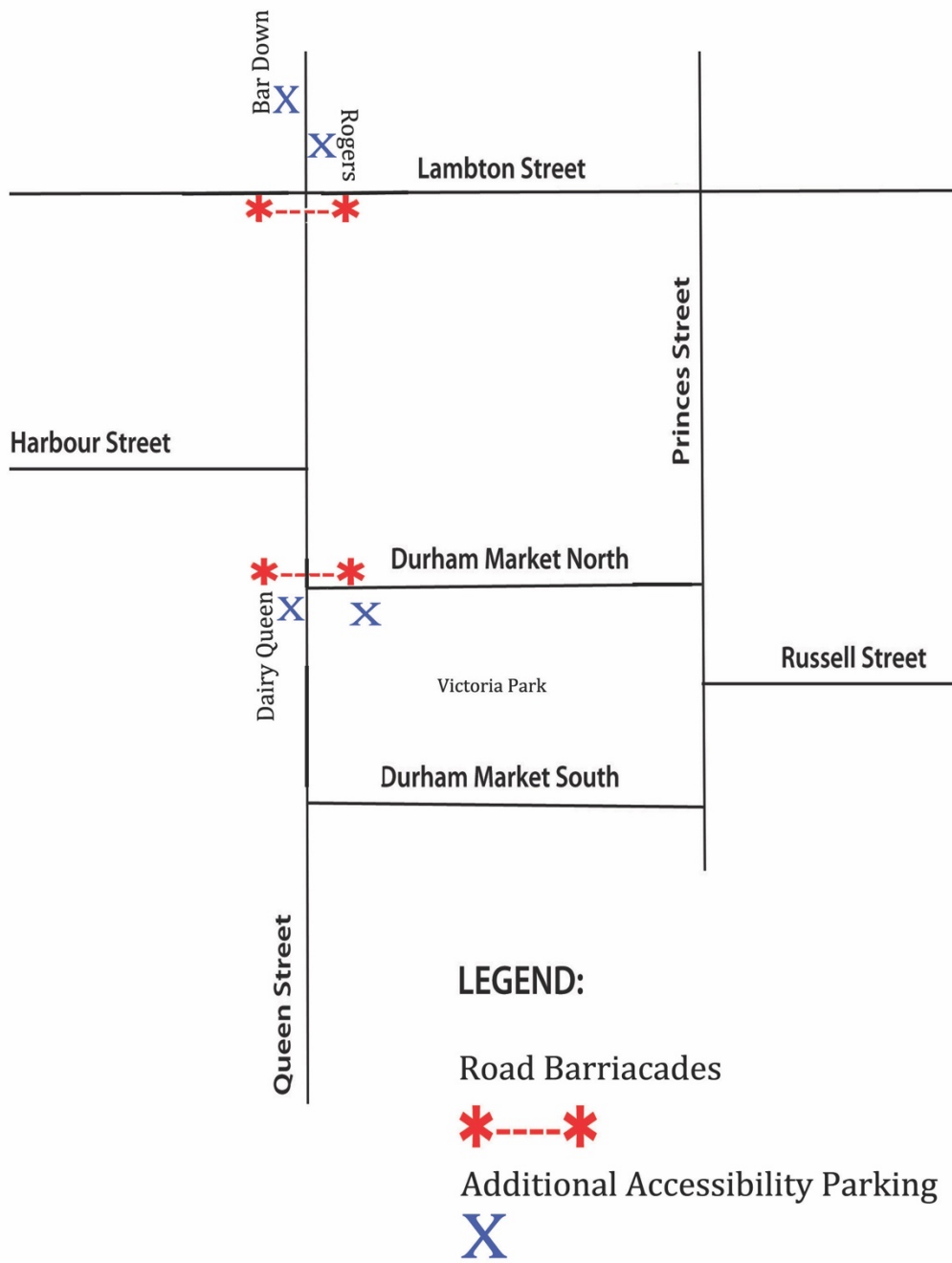
## 10. Map of Queen Street Road Closure



# Summer 2020 Queen St. Closure to Vehicular Traffic in Downtown Kincardine

## 11. Accessible Parking Map

### Queen St. Promenade Road Closures



## Summer 2020 Queen St. Closure to Vehicular Traffic in Downtown Kincardine

### ACCESSIBILITY FOR ONTARIANS WITH DISABILITIES ACT, 2005

Ontario Regulation 191/11 - Integrated Accessibility Standard - [80.23](#) When constructing new or redeveloping existing exterior paths of travel that they intend to maintain, obligated organizations, other than small organizations, shall ensure that new and redeveloped exterior paths of travel meet the following requirements:

- 1 The exterior path must have a minimum clear width of 1,500 mm, but this clear width can be reduced to 1,200 mm to serve as a turning space where the exterior path connects with a curb ramp.
- 2 Where the head room clearance is less than 2,100 mm over a portion of the exterior path, a rail or other barrier with a leading edge that is cane detectable must be provided around the object that is obstructing the head room clearance.
- 3 The surface must be firm and stable.
- 4 The surface must be slip resistant.
- 5 Where an exterior path has openings in its surface,
  - a. the openings must not allow passage of an object that has a diameter of more than 20 mm, and
  - b. any elongated openings must be oriented approximately perpendicular to the direction of travel.
- 6 The maximum running slope of the exterior path must be no more than 1:20, but where the exterior path is a sidewalk, it can have a slope of greater than 1:20, but it cannot be steeper than the slope of the adjacent roadway.
- 7 The maximum cross slope of the exterior path must be no more than 1:20, where the surface is asphalt, concrete or some other hard surface, or no more than 1:10 in all other cases.
- 8 The exterior path must meet the following requirements:
  - a. It must have a 1:2 bevel at changes in level between 6 mm and 13 mm.
  - b. It must have a maximum running slope of 1:8 or a curb ramp that meets the requirement of section 80.26 at changes in level of greater than 13 mm and less than 75 mm.
  - c. It must have a maximum running slope of 1:10 or a curb ramp that meets the requirement of section 80.26 at changes in level of 75 mm or greater and 200 mm or less.
  - d. It must have a ramp that meets the requirements of section 80.24 at changes in level of greater than 200 mm.
- 9 The entrance to the exterior path of travel must provide a minimum clear opening of 850 mm, whether the entrance includes a gate, bollard or other entrance design. Ontario. Regulation 413/12, section 6.